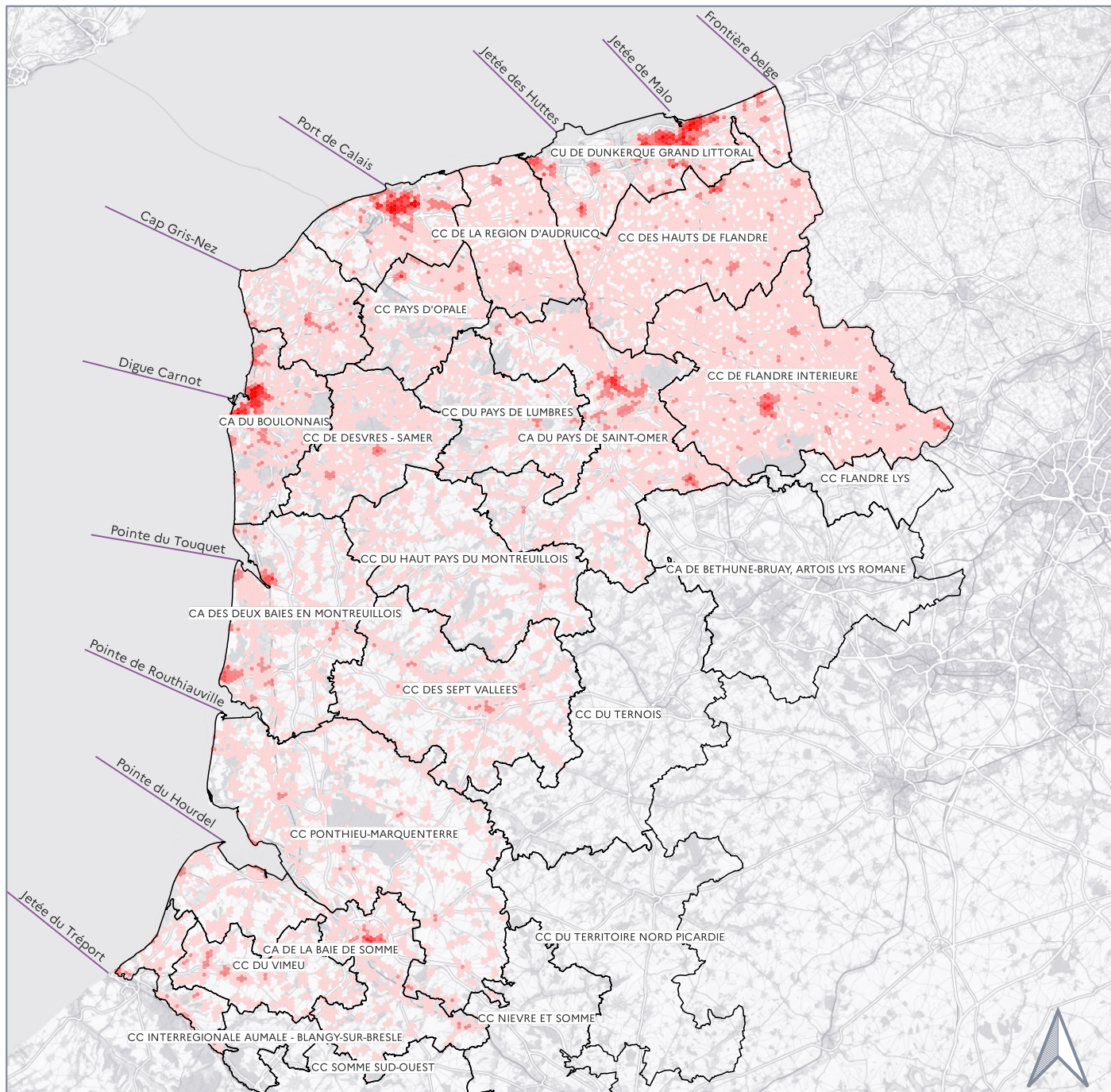


000 - Littoral des Hauts-de-France



Densité de population

RÉSILIENCE LITTORALE








Hauts-de-France



Périmètres de l'Atlas

-  Etablissement public de coopération intercommunale
-  Limites de cellule hydrosédimentaire

Densité de population par maille hexagonale de 500 m de côté

-  0 - 1
-  1 - 200
-  200 - 400
-  400 - 800
-  800 - 1 200
-  1 200 - 2 000
-  2 000 - 3 025

Sources :

- © Cellule hydrosédimentaire - Cerema / Ministère en charge de l'environnement / 2020
- Fonds topographiques OpenStreetMap sans toponymes - Géo2France / 2017 - 2018
- Périmètres des établissements publics de coopération intercommunale - data.gouv / 2020
- Population par communes - INSEE / 2022

0 10 20 km

